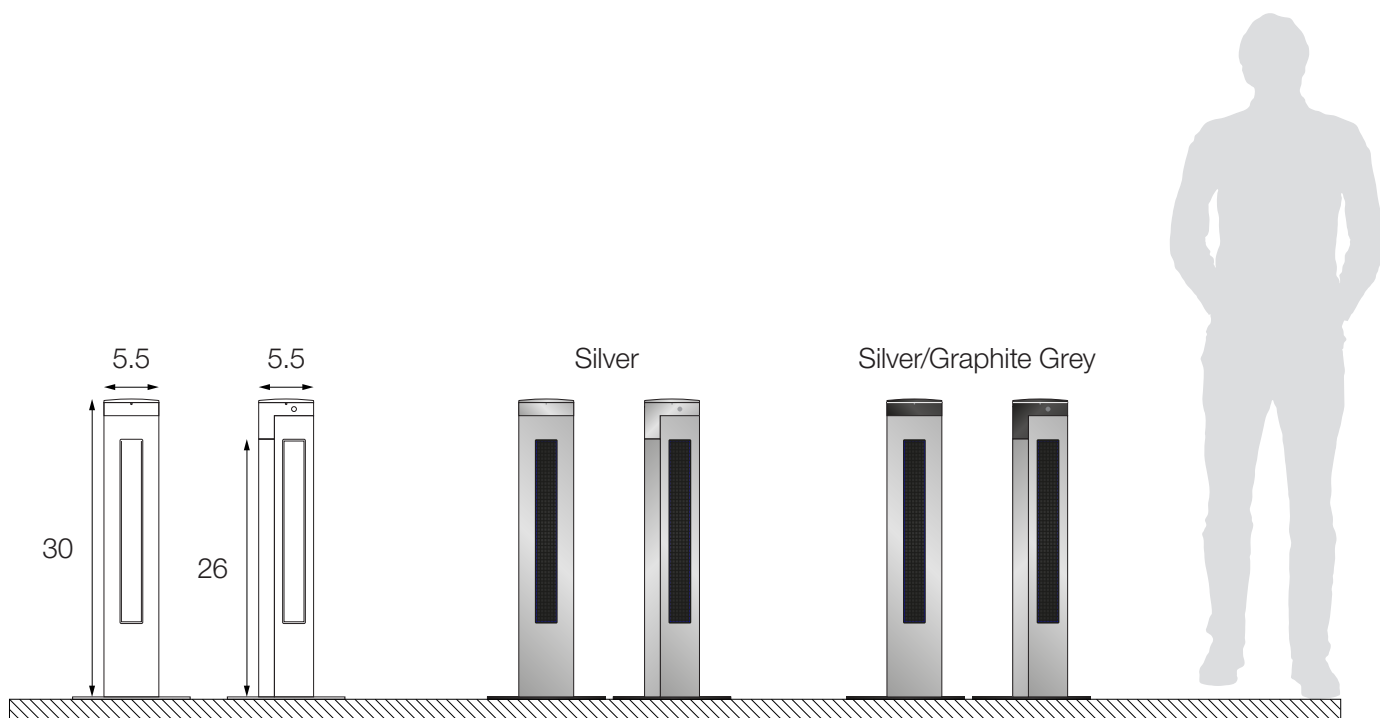
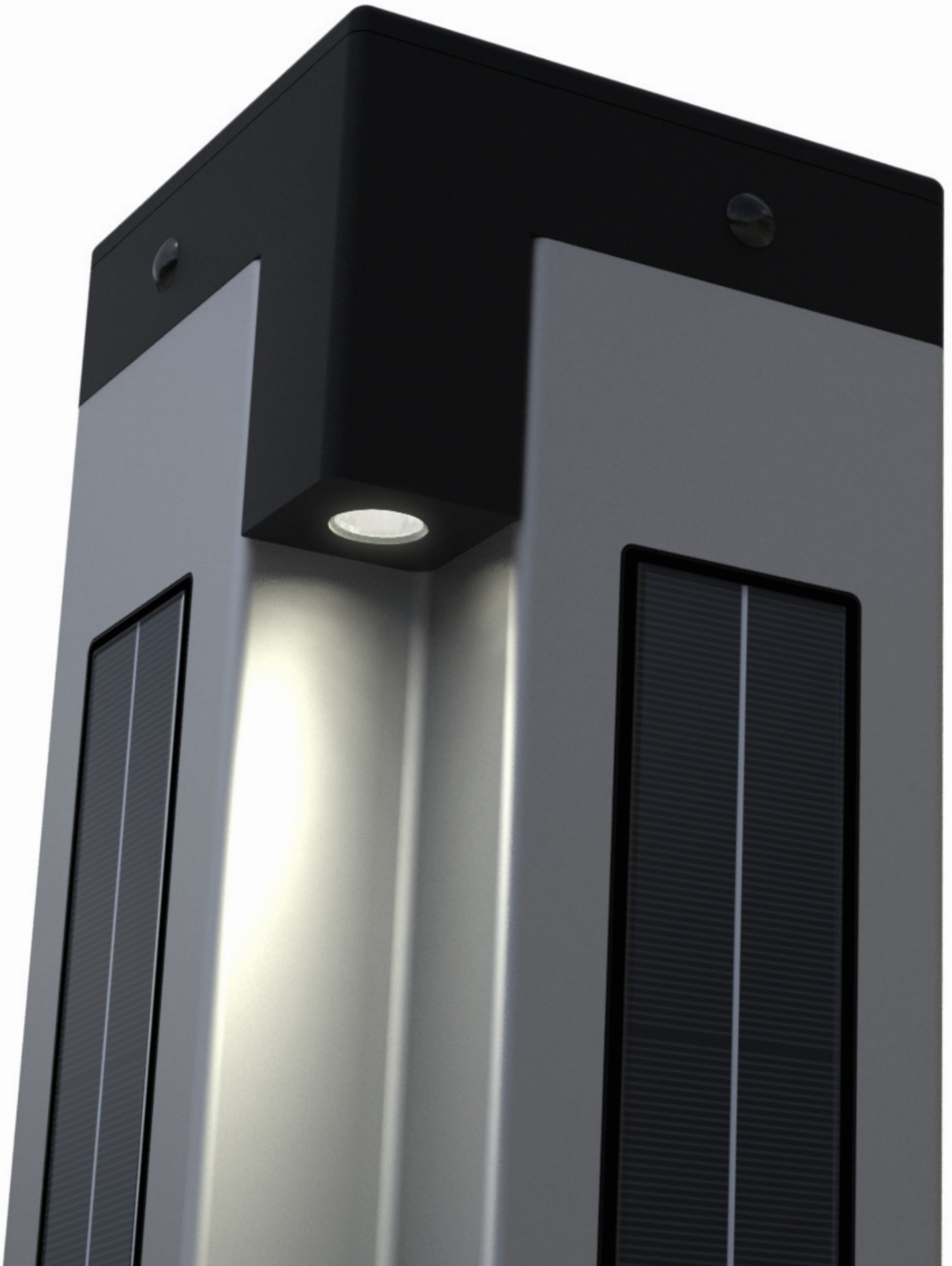


**Large post (all dimensions in inches)**



**Small post (all dimensions in inches)**





## Key features

- Zero energy costs
- Solar energy collection from four vertical faces totalling 145.7 square inches
- Power capacity ensures permanent LED operation from dusk to dawn
- Lithium battery system giving high efficiency and a working life of up to 10 years
- High-performance, long life, white LED
- Ten days of autonomy with automatic power regulation
- PIR sensors trigger automatic bright-up on approach
- Aluminium weatherproof construction – 3 year warranty on parts
- Significant savings on installation costs compared to traditional hard-wired systems

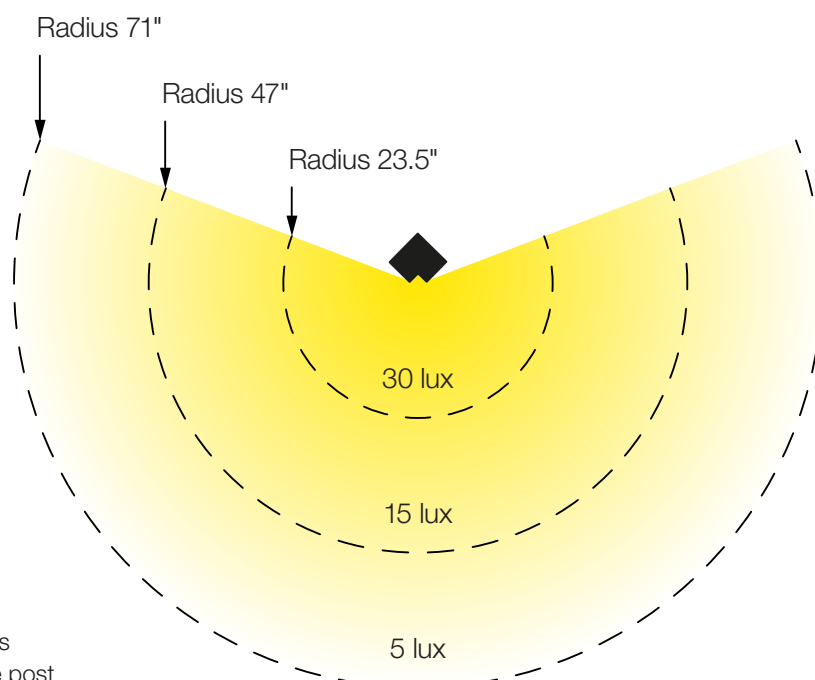
## Control system

The Solis Power Management System uses a microprocessor-based charge controller and LED driver. The controller is fully programmable using algorithmic load optimization and Pulse-Width-Modulation (PWM). This provides constant voltage monitoring and control of the four independent PV panel inputs. On-board voltage and current controlled battery charging at automated full/slow charge rates allowing 10% depth of battery discharge and over/under charging voltage cutoff.

Controller logic can differentiate between daylight and environmental ambient light and adds automatic control for seasonal dusk/dawn activation. The 'look-ahead' battery-load correlation routines allow for maximum off-line survival operation including a start-up self-test and status indication.

The power management module is fully sealed and incorporates IP67 rated connectors. Using the magnetic switch in the PIR sensors the controller provides sophisticated field-testing options that indicate power levels, charging and output conditions of the Solis Post without the need for disassembly or external connection.

## Light output



Measured at full brightness  
Readings taken from large post

# Technical Specification

Solar panels	Specification
Capacity	4 x 4.3W Minimum 20 year 80% peak power warranty
Material	Crystalline silicone
Construction	Photovoltaic cells sealed behind UV stabilized tempered glass
Standard	Meets or exceeds UL1703

Battery	Specification
Type	Sealed Lithium Iron Phosphate (LiFePO4) maintenance-free
Voltage and capacity	3.4V 10 A.h (35 watt/hours)
Operating temperature	-4 to 158°F
Life	3000 cycle (minimum)
Safety	Built-in module for voltage/current/temperature regulation
Transportation	Classified non-hazardous for surface, air and maritime shipping

Light Emitting Diode (LED)	Specification
Output	4000K (minimum) 75 CRI
Max voltage	6V
Max current	100mA
Lumens	90 (maximum)
Life	50,000 hours (minimum)

PIR sensors	Specification
Type	Passive infra-red with dome lenses
Range	33 feet at up to 190 degrees coverage
Function	Built in magnetic switch allows in-field unit testing

Materials	Specification
Cap and lid	Die-cast aluminium, to BS EN 755-2:2013
Post and chassis	Extruded aluminium to BS EN 755-9:2001
Processing	CNC machining with cutter heads using mineral-based coolant
Finishing	Powder coating to PE54/TRB7202/5/180/ST