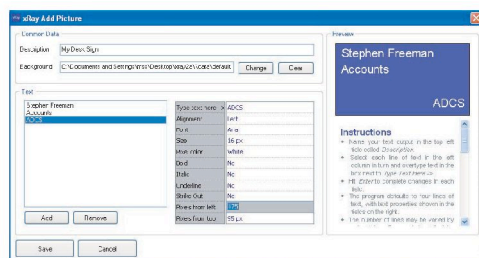


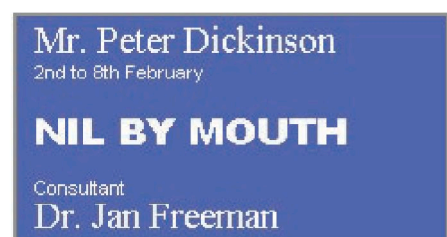
xRay data sheet

The xRay electronic sign system operates in three basic versions, each using the same physical sign but offering different functionality through software. The first version xRay Solo allows users to place information on their sign in real time. Users may want to display their name for example or leave a message, which could be displayed when away from their desk or office. Typical messages might be 'Do Not Disturb' so that a deadline might be met uninterrupted. This is especially useful in an open plan office where a worker has no door to close. The xRay sign can be desk or wall mounted with fixing solutions for drywall, or glass partitions. The user is free to change or create layouts and select different fonts and even import logos or bitmap images, pictograms and symbols.

In the second version known as xRay Central the signs can be controlled centrally and access to the editing functions restricted to only those authorised to make changes. This might be needed to allow for central allocation of temporary offices or desks to individuals in a 'hot desk' situation for example. Central control can also restrict the display throughout a building to the same layout and typefaces to maintain corporate standards. It may be possible to designate a small area of the sign for messages for the local user should that fit into the organisational culture. Another typical use for this version would be to control information in a private hospital suite. The data entry is all controlled via a password protected area in the online xWeb application.



xRay Room Booking uses the same hardware and applications as above but also is configured during set up to interface with a the xRay Room Booking web site. This allows authorised staff to browse for a room via the web and available rooms to be identified and booked. The sign shows live bookings, future bookings, the meeting's host. When a booking is in place the sign display changes and the sign shows the individual booking the room as the host along with the booking duration.



xRay

It is also possible during the booking process to arrange for drinks or food to be ordered appropriate to the quantity of individuals invited. As a reminder if this facility has been used a pictogram confirms the order. The order request is automatically forwarded to a pre-determined person responsible via email or SMS.

Along with the option to request drinks it is also possible to request food and a confirmatory pictogram is displayed. There is also an option to send invites and/or reminders via SMS or email. In each case this is confirmed on the sign in case you are the first there: was everyone invited?

Where there are other bookings after the current booking the sign displays these as blocks of time. Where these additional bookings are numerous they are displayed as a list, allowing the observer to see what slots are available. If it is decided to allow booking by telephone the appointed extension number can be inserted on screen.

By offering control from the clients own PC, xRay avoids dispersed responsibility for IT hardware and the erosion of client control and network security. xRay offers email and telephone support for software and sign hardware as part of a 12 month exchange warranty with 24 month and 36 month options available.

xRay requirements:

xRay sign connected over USB to host PC.
Internet connection for xRay Central or Room Booking.
Windows Vista, XP or 2000
Not available on 64bit processors

Options:

Powered USB hub to hold image if PC removed i.e. laptops
USB – extender up to 50m from PC.
Extent 12 month warranty to 24 or 36.



d line uk ltd
unit 16
network 43
buckingham court
brackley
northants
nn13 7eu
tel +44 1280 841200
sales @dlinesigns.com

www.carlfsigns.com
www.xrayinterface.com

Carl F